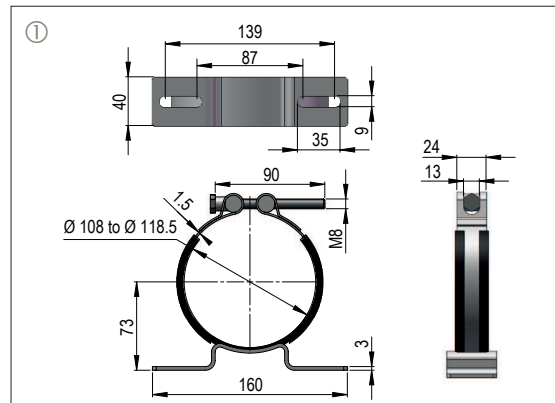


ACCESSORIES

► **ACS(L) adjustable clamps** ①

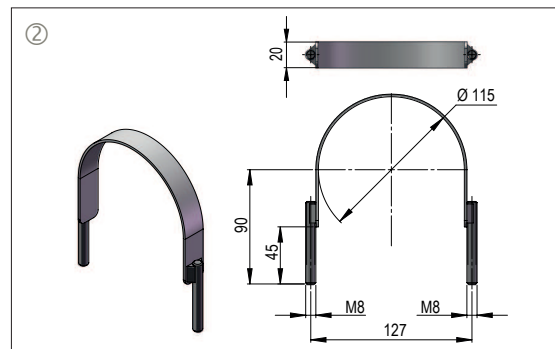
Volume (L)	Caracteristics	Code LEDUC
0.7 - 1 - 1.5 2 - 2.5 - 4	Zinc-plated steel	254021
	Zinc-plated steel quick-tightening	254031
	Stainless steel	254032



► **ACS(L) fixed clamps** ②

Volume (L)	Caracteristics	Code LEDUC
0.7 - 1 - 1.5 2 - 2.5 - 4	Zinc-plated steel	C001028
	Stainless steel	C001437

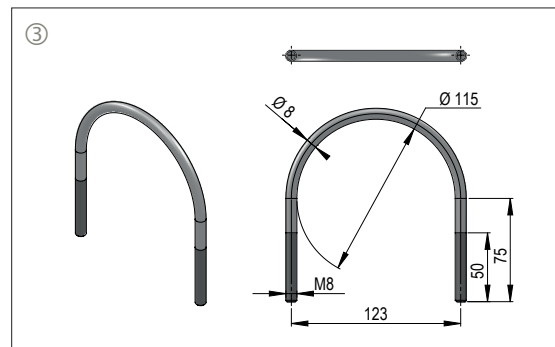
Tightening torque of the fixation screws: 20 Nm.



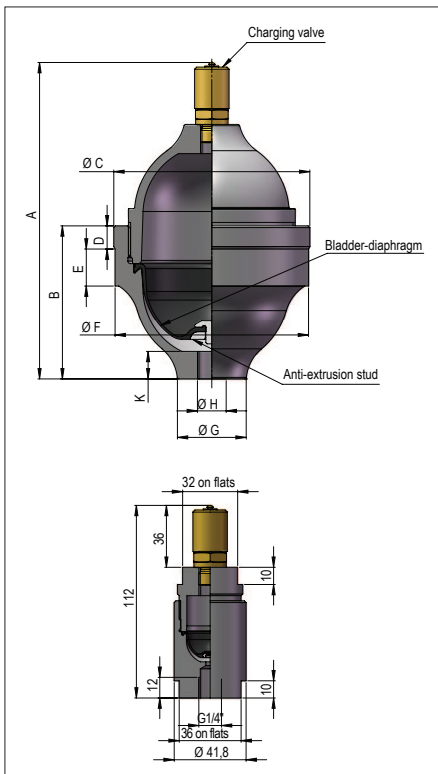
► **ACS(L) clamps** ③

Volume (L)	Caracteristics	Code LEDUC
0.7 - 1 - 1.5 2 - 2.5 - 4	Zinc-plated steel	C001031
	Stainless steel	C001032

Tightening torque of the fixation screws: 20 Nm.



CHARACTERISTICS AND DIMENSIONS



AS	LEDUC code	Nitrogen capacity Vo litres	Max. pressure (bar)	Weight (kg)	Dimensions (mm)								
					A	B	Ø C	D	E	Ø F	Ø G	Ø H	K
AS 00 20	060932	0.19	400	1.2	150	69	84.5	9	20	83.5	29	G1/4"	12
AS 00 50	060972	0.45	400	2.8	184	89	114	12	23	112.5	40	G3/8"	16
AS 00 70	060782	0.65	250	3	197	89	119.5	9	24	118.5	30	G3/8"	13
AS 01 00	060110	1.1	400	5.5	197	112	163.5	50.5	50.5	163.5	40	M18 x 1.5	12
AS 02 50	060812	2.55	400	14	251	161	213.5	37	29	210	51	G3/4"	17
AS 04 00	060121	4.1	400	22	298	202	251	44	40	247	105	M33 x 2	20
AS 10 00	060141	10.19	400	53	391	268	339	52.5	52.5	333	105.1	M33 x 2	20
AC 00 02	060955	0.017	400	0.640	see drawing								

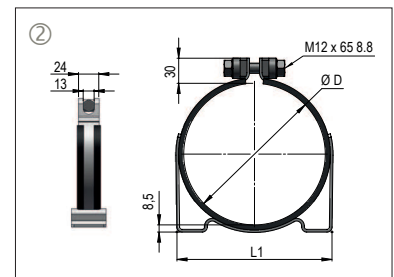
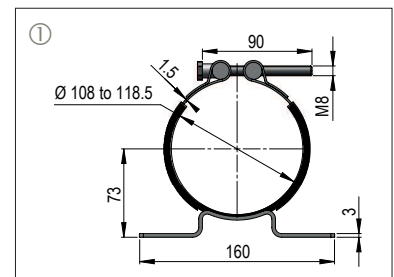
HYDRO LEDUC provides after sales service, supplies spare parts and can requalify your accumulators (retesting).

ACCESSORIES

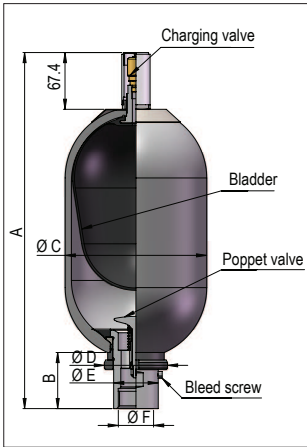
► Fixation clamps ① and ②

Volume (L)	Characteristics	LEDUC code
0.5 - 0.7	Zinc-plated steel	254021
	Zinc-plated steel quick-tightening	254031
	Stainless steel	254032

Volume (L)	Dimensions			Characteristics	LEDUC code
	Ø D	L1	L2		
1	168	184	148	Zinc-plated steel	254022
2.5	210	254	212	Zinc-plated steel	254006
4	247	300	248	Zinc-plated steel	254005



CHARACTERISTICS AND DIMENSIONS

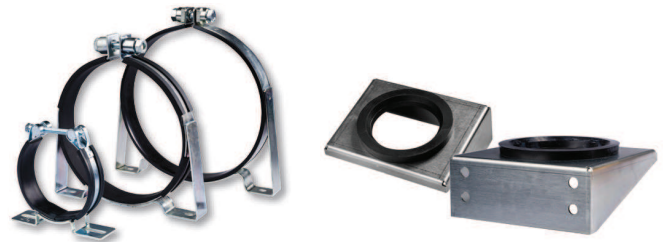


ABVE	LEDUC code	Nitrogen capacity Vo litres	Max. pressure (bar)	Weight (kg)	Dimensions (mm)					
					A	B	Ø C	D	E	Ø F
ABVE 4	066850	3.7	350	14	420	65	169	75	53	G1 1/4"
ABVE 10	066860	9.2	330	30	568	88	219	101	76	G 2"
ABVE 20	066870	17.8	330	50	888	88	219	101	76	G 2"
ABVE 32	066880	32	330	80	1380	88	219	101	76	G 2"
ABVE 50	066890	48.5	330	100	1885	88	219	101	76	G 2"

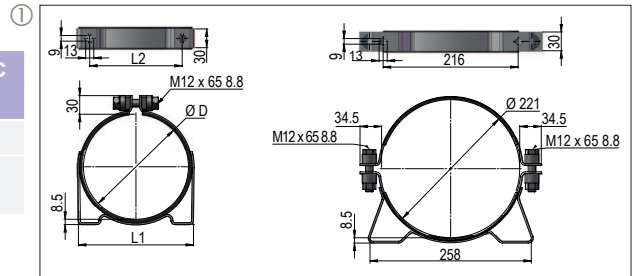
HYDRO LEDUC provides after sales service, supplies spare parts and can requalify your accumulators (retesting).

ACCESSORIES

► Fixation clamps ①

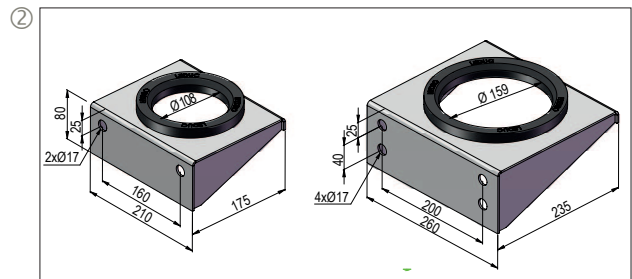


Volume (L)	Dimensions			Characteristics	LEDUC code
	Ø D	L1	L2		
4	168	184	148	Zinc-plated steel	254022
10 - 20 - 32 - 50	221	258	216	Zinc-plated steel	254007



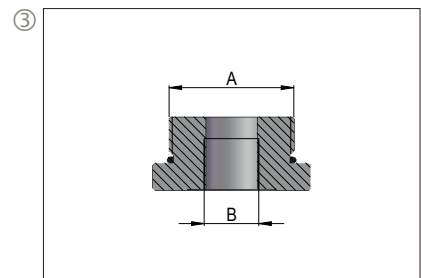
► Fixation seats ②

Volume (L)	LEDUC code
4	254012
10 - 20 - 32 - 50	254008



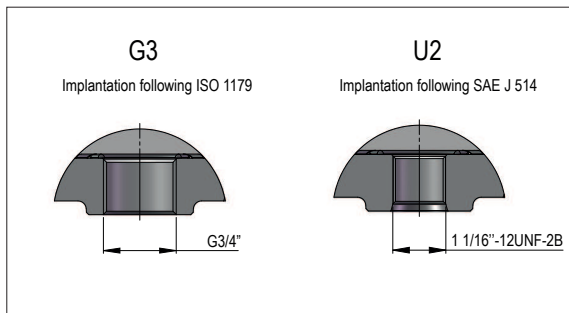
► Adaptors ③

Volume (L)	Dimension		Characteristics	LEDUC code
	A	B		
4	G1 1/4"	G3/4"	Steel	066305
10 - 20 - 32 - 50	G2"	G3/4"	Steel	066074
10 - 20 - 32 - 50	G2"	G1"	Steel	066068
10 - 20 - 32 - 50	G2"	Full	Steel	066069

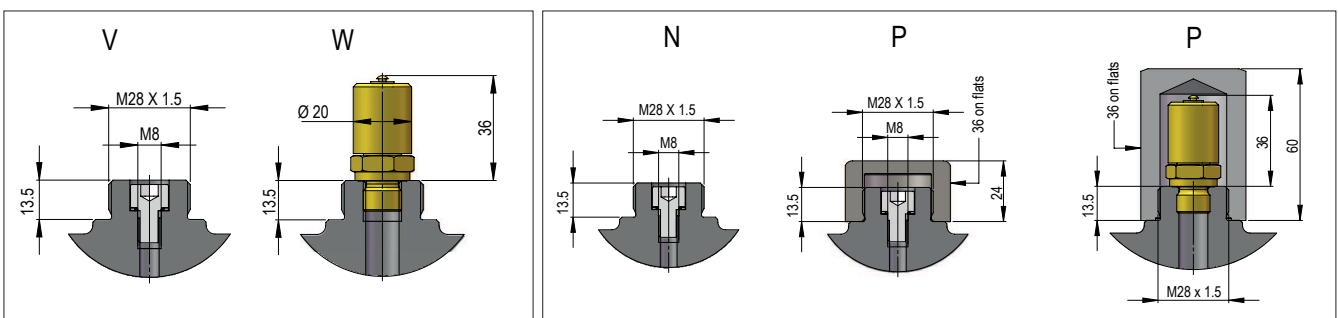


ABVE series

► Hydraulic connections - Code 05



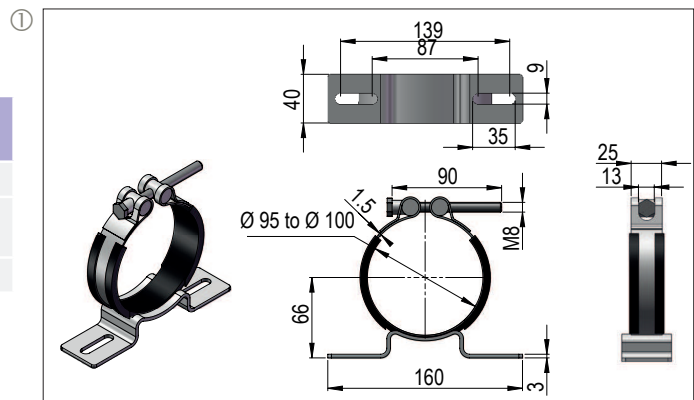
► Gas side connections - Code 06 ► Gas side options - Code 07



ACCESSORIES

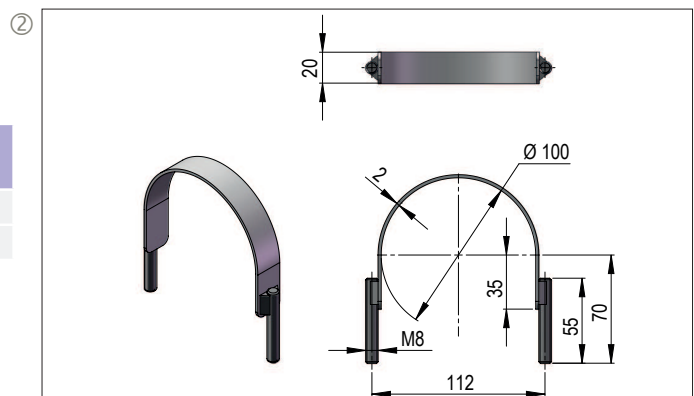
► Adjustable clamps ①

Volume (L)	Characteristics	LEDUC code
0.5 - 0.75 - 1 - 1.5 2 - 2.5 - 3 - 3.5 - 4	Zinc-plated steel	C001026
	Zinc-plated steel quick tightening	C001033
	Stainless steel	C001027



► Fixed clamps ②

Volume (L)	Characteristics	LEDUC code
0.5 - 0.75 - 1 - 1.5 2 - 2.5 - 3 - 3.5 - 4	Zinc-plated steel	C001029
	Stainless steel	C001030



Tightening torque of the fixation screws: 20 N.m.